

Enable and Disable Privacy Mode

How to Enable Privacy Mode

- Switch on back cover plate need to set

How to Disable Privacy Mode

- Switch on back cover plate need to reset manually or
- Enter Master Password and rotate the handle to open the door

Enable and Disable Passage Mode

How to Enable Passage Mode

- Enter Master Password # 5 # 00 #

How to Disable Passage Mode

- Set Auto-Lock Time

Turn Sound On/Off

To Mute

- Enter Master Password # 6 # 1 #

To Turn Sound On

- Enter Master Password # 6 # 2 #

Low Battery Alarm

- 3 Beeps and 3 flashes of light

Anti-Prank Alarm

- When the password is wrong for 3 times, there will be light flashing with alarm sound. The keypad will be locked for 180 seconds.

Reset Lock

- To reset the lock, remove the lock from door and long press the reset button on back side of front body for 3 sec, 3 short beeps, the screen flashes 3 times.

(Recommended to operate Reset function with the guidance of service technician).

After Reset

- Lock is restored to factory state.
- Master Password is set to 123456
- All User Passwords Fingerprints and Smart Cards are deleted.

Product Specification

Item		Specification
Condition of Installation	Door Thickness	35mm ~ 65mm
Opening Method	Password	4-9 Digit. Upto 99 can be registered
	Smart Key	Upto 99 can be registered
	Fingerprint	Upto 99 can be registered
Rated Voltage	DC 6V	LR6 1.5V AA size alkaline battery x 4EZ
Emergency Electric Power	Micro USB	Power bank with USB can be used in case of battery drain.
Material		Aluminium Alloy + Plastic

Sound and Light Prompt

Event	Lock Response
Unlock / Correct setting	1 long beep and screen flashes once
Locks	2 short beeps and screen flashes once
Incorrect Entry/ Error Operation	1 short beep and screen flashes once
3 Times Wrong Password Entry	3 long beeps and the screen flashes 3 times
Low Voltage	6 beeps and 6 flashes of Red LED
Power ON	1 long beep followed by 3 short beeps and screen flashes once



Godrej & Boyce Mfg. Co. Ltd.

Locking Solution and System Division, Plant 18, Pirojshanagar, Vikhroli,
Mumbai-400076, India.

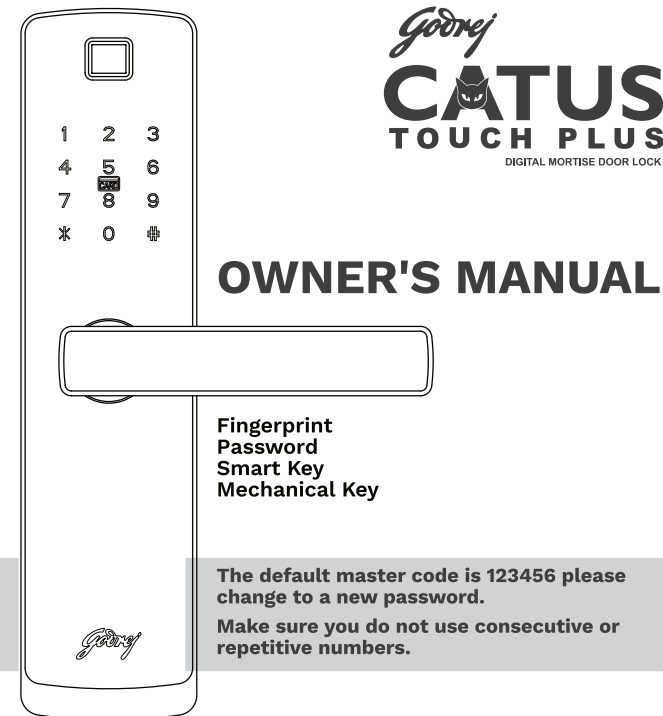
Website: www.godrejlocks.com

Consumer Care Cell: Sr. Executive- Godrej & Boyce Mfg. co. Ltd.
Plant 18, Pirojshanagar, vikhroli, Mumbai-400076, India,
Tel: (office) 022-67694890 E-mail: locksmkt@godrej.com

Product Disposal

Please Note that product should not be disposed off with other household waste at the end of their working life. To prevent possible harm to environment or human health from uncontrolled waste disposal, please instruct the metal scrap dealer to dismantle the product and segregate different materials for recycling and reuse.

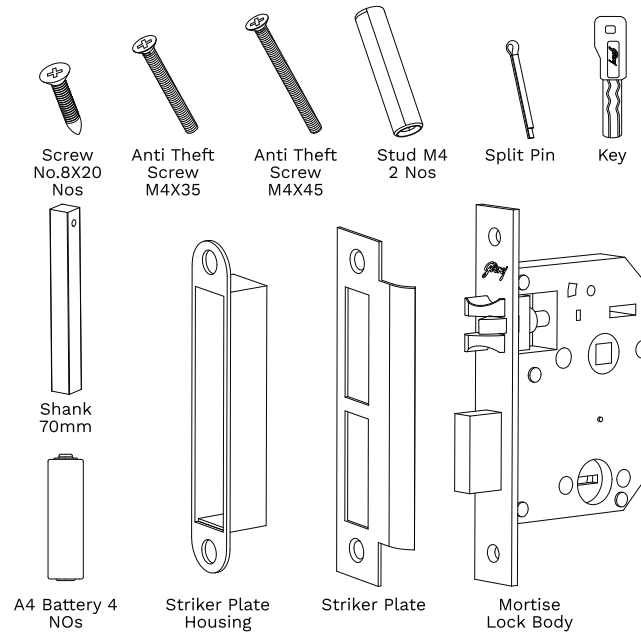
**The contents of this owner's manual are subject to change without prior notice in order to enhance performance of the product.*



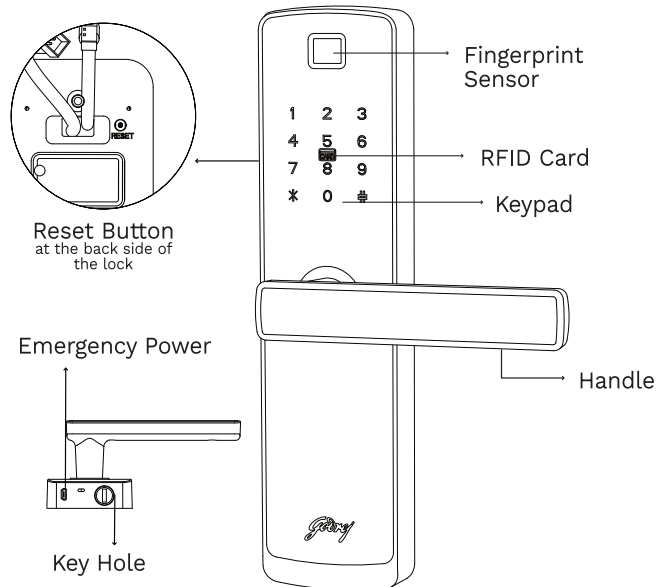
Safety Cautions

- Please read User manual thoroughly before operating the product.
- For security, the passwords should be changed on a regular basis.
- When the batteries are inserted in reverse positions, it may result in liquid leakage or rupture.
- When the batteries are flat, all the batteries should be replaced; do not use new batteries with used ones.
- Do not install, disassemble, or repair without the assistance of Technician.
- Use a soft and dry cloth to clean the product.
- Do not press or insert the buttons with pins.
- Do not use the product for any purpose other than a digital door lock.
- Do not let water get into the product.
- Do not subject the product to any severe impact.

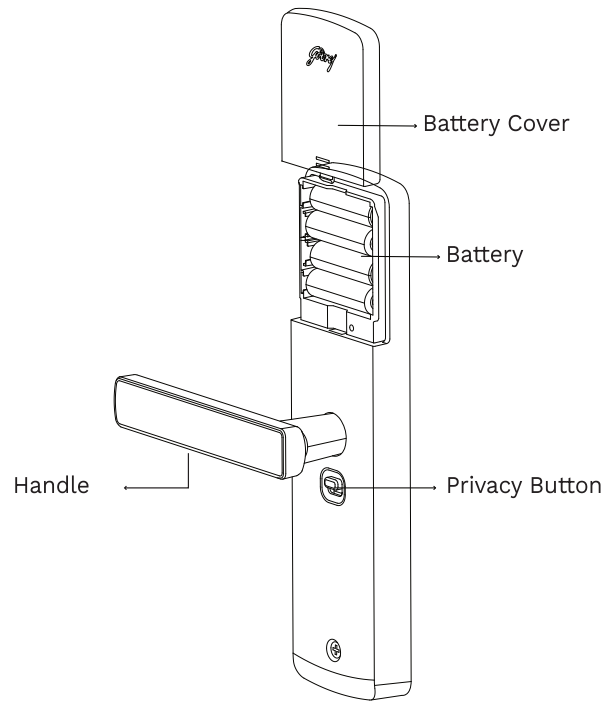
Product Components



Names of Individual Parts(Outside Body)



Names of Individual Parts (Inside Body)



Register Master Password, User Password, Fingerprint and Smart Key

How to Change Master Password

- Enter default Master Password (123456) # 4 # new Master Password (6 digits)# new Master Password (6 digits) #

How to Register User Password

- Enter Master Password # 1 # 1 # ID (02 to 99) # User Password #

How to Register Fingerprint

- Enter Master Password # 1 # 2 # ID (01 to 99) # Fingerprint Three times

How to Register Smart Key

- Enter Master Password # 1 # 3 # ID (01 to 99) # Touch the Smart Key

Delete User Password, Fingerprint and Smart Key

How to Delete User Password

- Enter Master Password # 2 # 1 # ID (02 to 99) # ID (02 to 99) #

How to Delete Fingerprint

- Enter Master Password # 2 # 2 # ID (01 to 99) # ID (01 to 99) #

How to Delete Smart Key

- Enter Master Password # 2 # 3 # ID (01 to 99) # ID (01 to 99) #

Delete all User Passwords, All Fingerprints and All Smart Keys

How to Delete All User Password

- Enter Master Password # 3 # 1 # Master Password #

How to Delete All Fingerprint:

- Enter Master Password # 3 # 2 # Master Password #

How to Delete All Smart Key

- Enter Master Password # 3 # 3 # Master Password #

How to Delete All User Password, Fingerprints and Smart Cards at the Same Time:

- Enter Master Password # 3 # 0 # Master Password #

Set Auto-Lock Time

The self-locking function is to re-lock after specified time (3-30 seconds) after unlocking. (Default time is 5 second)

- Enter Master Password # 5 # time (3-30) # Master Password #

Note: 3~9 seconds, you can directly input 3,4,5..., no need for 03, 04, 05.