

Godrej

SeeThru**SMART**

BULLET CAMERA



QUICK START GUIDE

NOTE

- Above picture is only for representation
- Please read this instruction carefully before operating the unit and keep it for further reference.
- All the examples and pictures used here are for reference only.
- The contents of this manual are subject to change without notice.

WARNING & CAUTION

- If the product does not work properly, please contact your dealer or **Godrej technical support center i.e.18002099955**. Never attempt to disassemble the camera yourself. (We shall not be responsible for any problems caused by unauthorized repair or maintenance.)
- Do not allow water or liquid intrusion into the camera.
- While using the product, you must follow strict compliance with the electrical safety regulations of the nation and region. When the product is mounted on wall or ceiling, the device shall be firmly fixed.
- Do not use camera beyond specified voltage range as mentioned on camera label.
- Do not drop the camera or subject it to physical shock. Avoid touching the camera lens.
- If cleaning is necessary, please use clean cloth to wipe it gently.
- If the device will not be used for a long time, please cover the lens cap to protect the device from dirt.
- Do not aim the camera at the sun or extra bright place.
- Do not place the camera in extremely hot, cold (The operating temperature shall be $-30^{\circ}\text{C}\sim 60^{\circ}\text{C}$), dusty or damp locations, and do not expose it to high electromagnetic radiation.
- To avoid heat accumulation, good ventilation is required for operating environment.

PACKAGE CONTENT



Camera



Quick start guide



4 tapping screws
1 machine screw

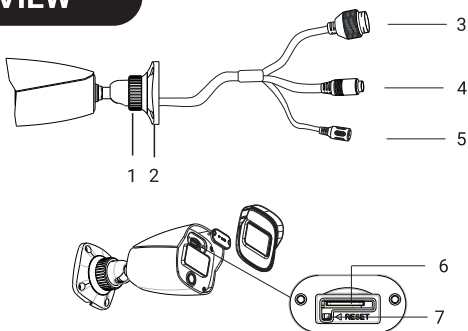


Drill Template



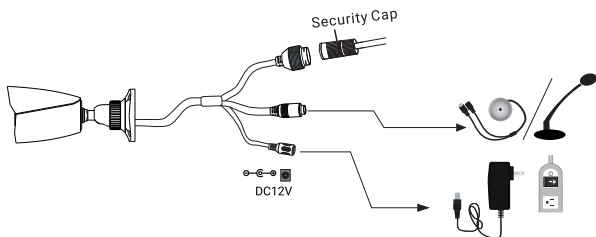
Plastic plug $\times 4$

OVERVIEW



1	Fixed ring	5	Power connector
2	Mounting base	6	Micro SD card slot
3	Ethernet connector	7	Reset
4	Audio input		

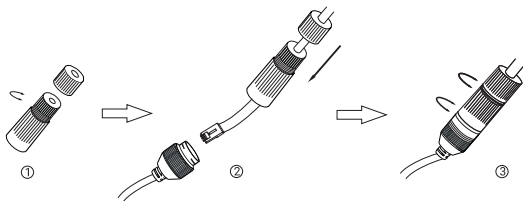
Note: Product specifications may vary based on model number. For detailed camera specifications please visit Godrej Website (www.godrejsecure.com) or contact Godrej technical support center i.e 18002099955



- *1 It is recommended to install the security cap for outdoor installation.
- *2 DC12V power supply is not required if a PoE switch is used to power the camera.

Note: Company reserves the right to make changes in the specification of products without prior notice.

CONNECTING NETWORK CABLE

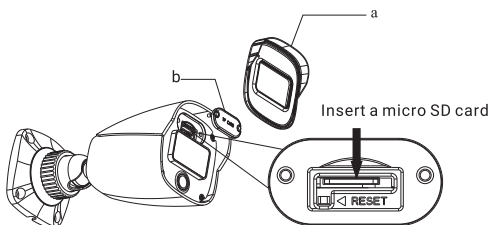


1. Loosen the nut from the main element.
2. Run the network cable (without RJ 45 connector) through the both elements. Then crimp the cable with RJ 45 connector.
3. Connect the cable to the hermetic connector. Then tighten the nut and the main cover.

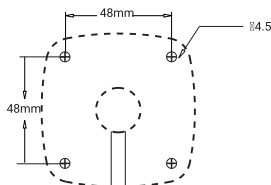
INSTALLATION

Please make sure that the wall or ceiling is strong enough to withstand 3 times the weight of the camera. Please install and use the camera in the dry environment.

1) Install a micro SD card. Remove the plastic cover (a) from the camera. Loosen the two screws of item (b) and remove it. Insert a micro SD card. Reinstall item (b) and (a).

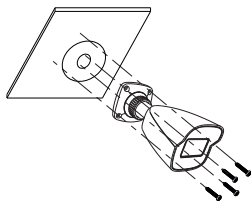


2) Attach the drill template to the place where you want to fix the camera and then drill the screw holes and the cable hole on the wall according to the drill template.

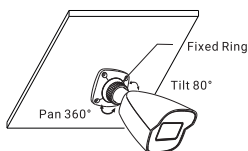


3) Route and connect the cables .

4) Secure the mounting base with camera to the wall with screws as shown below.



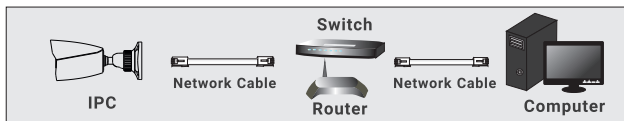
5) Bracket adjustment. Before adjustment, preview the image of the camera on a monitor and then loosen the fixed ring to adjust the view angle of the camera.



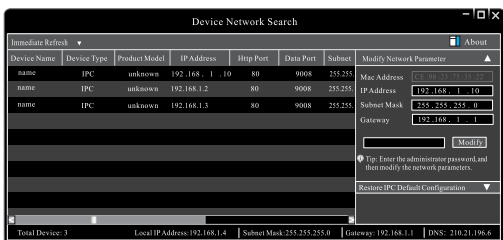
6) Tighten the fixed ring after the adjustment.

NETWORK CONNECTION

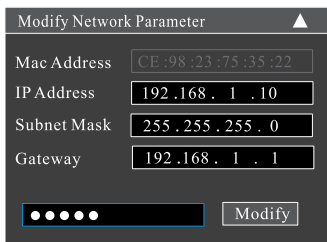
Access Camera Through IP-Tool



- 1) Make sure that the camera and the PC are well connected via LAN.
- 2) Download IP-Tool from Godrej web site(www.godrejsecure.com) or connect to our Godrej technical support center i.e.18002099955.



- 3) Double click the camera information listed in the IP-Tool to open the web browser.
The default IP address of this camera is **192.168.1.10**
Then follow directions to download and install the plugin if prompted.



- 4) Activated and log in the camera. The default user name is **admin**; the default password is **admin** or you need to self-define the password. Please operate according to the actual situation.
- 5) Double-click the camera listed in the IP-Tool or manually enter the IP address in the address bar of the web browser to connect IP-CAM. Then follow directions to download and install the plugin.
- 6) Enter the username and password in the login interface.

INFORMATION ON E-WASTE HANDLING AND MANAGEMENT

Dear Customer,

The Ministry of Environment and Forests have published the E-waste (Management and Handling) Rules 2010, which comes in effect from 1st May 2012. E-waste is defined as any electrical or electronic component of products in whole or in part, or rejects from their manufacturing or repair process, which are intended to be discarded. These rules apply to every producer, consumer or bulk consumer involved in the manufacture, sale, and purchase and processing of electrical and electronic equipment or components as specified in Schedule 1 (please refer to our website www.godrej.com in the 'Good & Green' section of CSR module for more details). Under these rules, specific roles and responsibilities are defined for producers, consumers and recyclers handling and managing e-waste.

E-waste is to be managed in an environmentally sound manner, which means taking steps to ensure that health and environment are protected from adverse effects of hazardous substance contained in such wastes.

Rule 6 of the E-waste (Management and Handling) Rules 2010 states that bulk consumers of electrical and electronic equipment shall be responsible for recycling of the e-waste generated by them. Bulk consumer means bulk users of electronic and electrical equipment such as Central Government or State Government Departments, public sector

undertakings, banks, educational institutions, multinational organizations, and international agencies, private companies that are registered under the Factories Act, 1948 and Companies Act, 1956. The bulk consumers have to ensure that the e-waste generated by them is channelized to authorized collection center or is taken back by the producers. They shall maintain records of e-waste generated by them in Form 2 and make such records available for scrutiny by the State Pollution Control or the Pollution Control Committee concerned.

All consumers of electrical and electronic equipment, irrespective of their status as bulk consumers or not, shall ensure that e-waste generated by them is channelized to authorized collection Centre(s) or registered dismantler(s), or recycler(s) or is returned to the pick-up/take back services provided by the producers. (Please refer to our website www.godrej.com in the 'Good & Green' section of CSR module for more details).

All our products, intended to be recycled under the category of e-waste (as defined above), carry a label or stamp of the WEEE symbol (A wheellie bin with a cross), which states that it falls under the hazardous waste category and is not to be disposed along with normal garbage. We seek your support in ensuring environmentally sound management of e-waste and aid us in sustaining our earth's natural resources and maintaining the earth's green cover intact for the benefit of our future generations.



Godrej & Boyce Mfg. Co. Ltd., Godrej Security Solutions,
Regd. Office: Plant No. 17, Pirojshanagar, Vikhroli, Mumbai - 400079

 **Toll Free: 1800 209 9955 (Sales & Service)**  **+91 9321665511 (Service)**

 **Email: secure@godrej.com (Sales), secure@godrej.com (Service)**

 **www.godrejsecure.com** **Follow us:**  **GodrejSecure**  **godrejsecure**